

SUBTLY EFFECTIVE

A little-used kitchen nook gains stature



Part of a kitchen remodel for a Del Cerro home, this little breakfast nook now emphasizes simple, neutral, classic and comfy instead of trendy.

To refresh a breakfast alcove with a purple passion color scheme that overpowered the room's calming garden view, designer Brittney Nielsen took an understated approach.

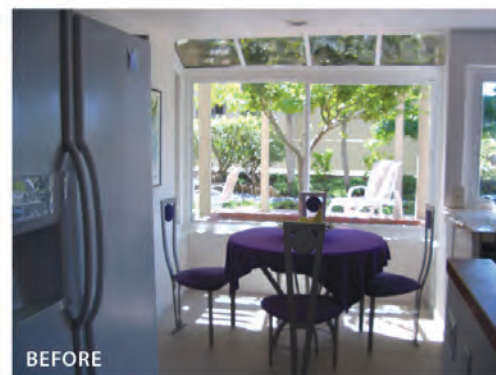
"The purple was too dark and monochromatic for the small space," she says. "We changed the glass tabletop to a natural cherry wood and the porcelain tile floor to bamboo. I used white for the light fixture and chairs to break up the wood tones."

Chair-back cutouts helped to create the illusion of space. Well-edited furniture and a cabinet with decorative planks of cherry wood took the look from outdated modern

to timeless modern. The contrast of woods against white amplified the brightness of the recessed spot.

"Large windows bring quite a bit of natural light to the space, but the area is small," Brittney says. "By using medium wood tones with lighter countertops, I was able to create more definition. The bamboo floor adds warmth and doesn't show the dirt the way the porcelain tile did."

The update, with its more comfortable chairs and classic look, has taken a space that was infrequently used and transformed it into the area where most of the meals are served. ❖



BEFORE